

# 1500 EX



[www.ommelift.com](http://www.ommelift.com)

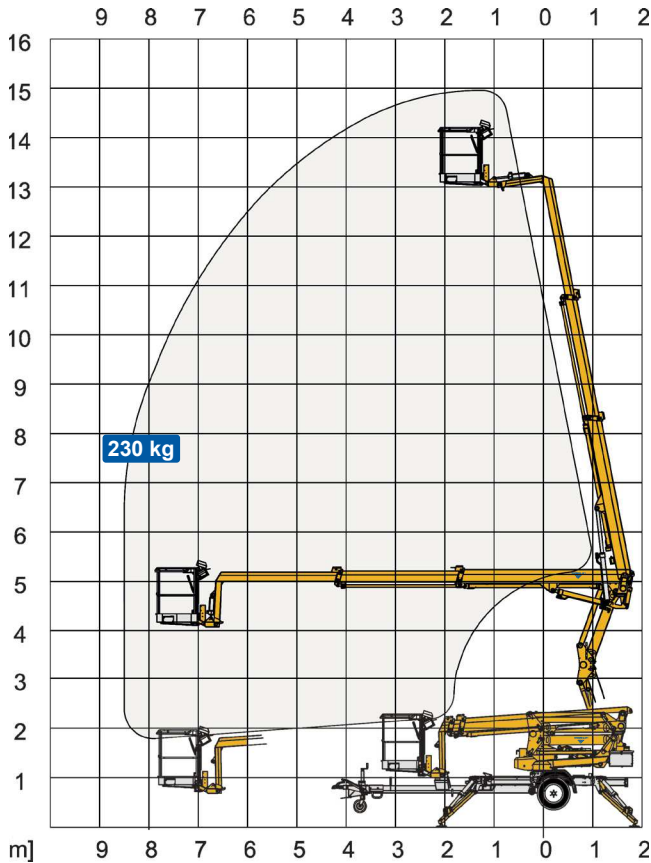
## Trailer lift - Articulated

# OMMELIFT



**Built to last - ask our users!**

# 1500 EX Trailer lift



Technical Data:		1500 EX	1500 EXB	1500 EXB Lightweight
Max. working height			15.0 m	
Max. platform height			13.0 m	
Max. outreach			8.5 m	
Up and over clearance			5.0 m	
Angle boom length (boom + basket)			2.0 m	
Jib length (jib + basket)			-	
Vertical jib rotation			-	
Turret rotation			± 355°	
Basket rotation			± 50°	
Max. basket load			230 kg	
Basket size			1.25 x 0.8 x 1.1 m	
Stabilizer pad size			ø200 mm	
	<sup>5</sup> Petrol <sup>6</sup> Diesel	<b>230V / 16A</b>	<b>BATTERY</b>	<b>Lithium</b>
Engine			<sup>5</sup> Option <sup>6</sup>	
Fuel tank capacity				
Generator				
Battery pack			24V/120Ah/5h	24V/120Ah
Charger			24 V / 15 A	24 V / 40 A
Double charger system			Optional	Optional
Elec. descent			Optional	
<a href="http://www.ommelift.com">See www.ommelift.com for more features and options</a>				
Self-propulsion with hydraulic engagement of traction rollers			Standard	
Gradeability			14% / 8°	
Ground to tire clearance at max. set-up			Min. 300 mm (10.8% / 6.1°)	
Total weight		2000 kg	2050 kg	2000 kg
Ground pressure, outrigger pad		12.9 kg/cm <sup>2</sup>	12.4 kg/cm <sup>2</sup>	12.9 kg/cm <sup>2</sup>
Ground pressure with 0.4 x 0.4 m spreader plate		0.7 kg/cm <sup>2</sup>	0.7 kg/cm <sup>2</sup>	0.7 kg/cm <sup>2</sup>
Max. force, outrigger		10.5 kN	10.5 kN	10.5 kN
Hydraulic stabilizers			Standard	
Controls			2-step	
Flush basket mount			Standard	
Elec. power outlet in basket			Standard	
Tool trays in basket			Standard	

